

What is a Foundation degree?

Foundation Degrees:

- are new employment (vocationally) – related higher education qualifications;
- provide specialist technical knowledge and skills needed to improve business performance and to recognise high level competence;
- are developed in conjunction with employers related to occupational standards produced by employers;
- are available and delivered in a variety of ways such as via the internet or distance learning, and through direct instruction at a university;
- will provide greater job satisfaction and benefits for the employee as well as the employer
- allow you to progress to an honours degree when they are progressively available without you needing to leave your employment;
- have transferable skills of value across many industrial sectors in Process and Manufacturing.



They will add a different dimension to learning beyond level 3 that allows a better understanding of how step change in productivity can be acquired. Foundation Degrees should not be seen as a qualification that leads to white collar jobs but a qualification of value to blue collar workers who are going to be part of a team that introduces significant change in Process and Manufacturing.

It also provides management with an opportunity to delegate accountability and to introduce different working methods that will add value. The workplace provides the centre of learning. The Foundation Degree candidate is provided with additional knowledge and skill to be able to investigate how to improve performance, prepare reports and recommendations and to be involved later in implementing any change programme resulting from agreeing what has to be done.

In addition it provides an opportunity to develop leadership and team working skills which is so important to the completion of tasks in conjunction with other people.

A Foundation Degree in Process and Manufacturing will be flexible enough to accommodate what employers must do to develop their businesses for an uncertain future.

Why use a Foundation degree?

Employers need to be convinced there are 'bottom line' benefits in using Foundation Degrees. The Foundation Degree provides an opportunity to 'empower' employee(s) with potential to review and improve productivity and production performance.

The Foundation Degree will provide new information on modern manufacturing methods and a detailed study of the technology that supports industry activity, as well as developing an individual's skill to be able to reflect and learn more from what they already know and can do. Foundation Degrees are of value for any employee who reaches a level 3 NVQ.



Who awards the Foundation degree?

The Foundation Degree for in Glass and Management will be awarded by a lead university selected by employers in the sector. Other universities, colleges and providers will be fully involved in order to use the expertise of a wide range of higher institutions that already provide technology related learning to the Sector.

The lead university will validate all learning delivered by other institutions in order to ensure a consistent high standard of quality throughout the programme.



What are the entry requirements?

- There are no nationally set entry requirements for the Foundation Degree. It is up to the university offering the programme to decide eligibility.
- The most important criteria is the ability to benefit from the programme.
- An Advanced Modern Apprenticeship with a level 3 NVQ, including appropriate key skill units.
- 'A' level or vocational 'A' levels.
- GNVQs, NVQs or other level 3 vocational qualifications.
- No educational or vocational qualification but with advanced work experience.

How will learners study for a Foundation degree?

- The workplace is an important centre of learning. Studying what happens in the workplace is essential to benefit from this programme. There are three major components to the Foundation Degree.
- The Foundation Degree programme is planned to be over a 3 year period. The cost of the programme will be decided by the lead university.. There will be additional costs associated with travel, books, and accommodation where appropriate.
- **Generic Outcomes** related to understanding the business, critical thinking, reflection, communication, managing information, report writing, creative thinking, problem solving, investigation skills, planning, action research/learning, organisational effectiveness, learning how to learn, self directed learning, setting personal and work objectives, project management and other outcomes including health and safety, risk assessment, etc.
- Glass principles and practice at the Foundation Degree Level.
- Management; managing Change; people skills; risk management; industrial engineering; work study; method Study; time measurement; productivity improvement; continuous improvement; lean manufacturing; low cost automation; automation; flow; batch and jobbing production; activity sampling; business Process engineering;

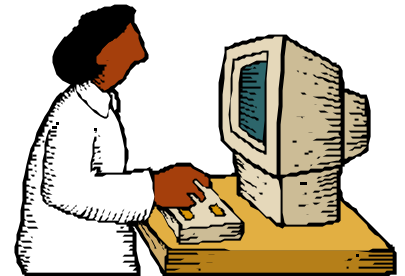


Computer Aided Manufacture (CAM); Computer Integrated Manufacturing (CIM); Kaizen; Kanban; Total Quality Improvement; Materials Requirement Planning (MRP); Design for Quality; Group Technology; Cost Reduction; Value Analysis; Value Engineering; Scheduling; Stock Materials Planning and Control; Work in Progress Control and Planning; Scheduling; Preventative Maintenance; Training and Development; Just in Time; Job Design; Job Enrichment; Job Enlargement; Factory and Process Layout; Manufacturing Cells; Programme Evaluation and Review Techniques (PERT); Gantt Charts; Scanlon Plan; Statistical Quality Control (SPC); Robotic Technology and Flexible Manufacturing Systems.

Specific technology outcomes?

The lead university and colleges will assist in awarding credits to each of the attached modules in conjunction with experts from the glass industry.

Not all the modules will be studied by a candidate doing the Foundation degree. The final details of these modules will be agreed in the final proposal produced by the lead university. There will be enough flexibility to use the degree for any of the glass sector. The important consideration is that the candidate and employer are helped to improve business performance using the degree framework



Next Steps & More Information

You can access more information by contacting Dr Alan Hearsom at GTL Tel: 0114 2270072 or email alan@glass-training.org.uk The lead university is Leeds Metropolitan. The FD programme is delivered by Wakefield College. The programme has been designed to be delivered at a distance using the learn-direct **learning through work** user friendly website. The student provides answers to questions from tutors through a dialogue box. Blended learning is used, where the student uses the workplace as a centre of learning activity.

